



Kineton CE Primary School

Class plan - Year 1 Cycle A



Childhood **History**

Companions

- Our Wonderful World **Geography**
- Shade and Shelter **Design and technology**
- Mix It (Y1) **Art and design**
- Funny Faces and Fabulous Features **Art and design**
- Everyday Materials **Science**
- Human Senses **Science**

Term

Autumn

Key Texts

Colour Monster- Anna LLenas That Rabbit Belongs to Emily Brown by Cressida Cowell & Neal Layton Paper Dolls- Julia Donaldson Beegu- Alexis Deacon A Street through Time- Steve Noon Traction Man - Mini Grey

Additional texts

Here We Are - Oliver Jeffers

Memorable experience (trips, visitor,fieldwork)

Trip to St Johns Meet a fireman Visit a care home

Innovate challenge

Create a Museum

English - Genres

Colour Monster- Story to entertain. Traction Man - comic strip to entertain. Little Red Riding Hood- Wanted poster to inform & retell the story The Rabbit who Belongs to Emily Brown- adventure story Beegu- Character description, setting description, postcard Instructions- how to care for a baby Beegu Recount of trip (ed verb endings) Invitation to the nativity

English - punctuation

Finger spaces Capital letters formation Sentence demarcation Nouns Adjectives Verbs - ed and ing endings. (suffixes) Capital letters for Proper nouns. Exclamation marks

Art and design

[Mix It (Y1)] - Colour theory; Colour wheel; Primary and secondary colours. [Funny Faces and Fabulous Features] - Portraiture; Collage

Computing

Self image and Identity Online relationships

Design and technology

[Shade and Shelter] - Investigating existing products; Designing and making shelters and dens; Prototypes; Safety rules; Materials. [Funny Faces and Fabulous Features] - Stitching to join materials; Embellishing

Geography

Settlements; Changes over time. [Our Wonderful World] - Physical and human features; Picture maps; Cardinal compass points; Equator and hemispheres; Continents; Oceans; Countries and capital cities of the UK; Protecting natural environments; Fieldwork

History

Historical vocabulary; Historical artefacts; Timelines; Everyday life and childhood in the 1950s; Significant events - Queen's coronation; Enquiry

Music

Hey you! Christmas production

PSHE

Stages of life; Changes Physical health and wellbeing- fun times Taking care project

PE

Gymnastics -Traditional Tales Multi Skills - Throwing and Catching Dance- Seasons Multi Skills - Bat and Ball

RE

What do Christians believe God is like? Why does Christmas matter?

Science

[Shade and Shelter] - Naming everyday materials; Properties and uses of materials. [Everyday Materials] - Materials; Natural materials; Human-made materials; Grouping materials; Properties of materials; Venn diagrams; Comparing and testing materials; Working scientifically - Identifying and classifying, Observing changes over time, Comparative test,

Pattern seeking, Research. [Human Senses] - Humans; Labelling body parts; Counting body parts; Similarities and differences in humans; Five senses – sight, hearing, touch, smell, taste; Senses and danger; Sensory loss and assistive tools; Sense of touch investigation; Working scientifically – Identifying and classifying, Comparative test, Pattern seeking, Research



Y1 WRM – Autumn (v3.0) **Mathematics**

Mathematics

Block 1: Number – Place value – Numbers to 10; Block 2: Number – Addition and subtraction – Addition, Subtraction, Problems (Addition and Subtraction); Block 3: Geometry – Shape, Pattern and Symmetry



Bright Lights, Big City **Geography**

Term

Spring

Key Texts

The Queen's Hat- Steve Antony Dear Earth - Isabel Otter Paddington- Michael Bond The Big Book of the UK - Imogen Russell Williams

Additional texts

Topsy and Tim Visit London – Jean and Gareth Adamson

Memorable experience (trips, visitor,fieldwork)

Local landmarks Post a letter

Innovate challenge

Marley's trip to London

English - Genres

Inform - Letter to the King Entertain - The Queen's hat - retell the story Create 'The King's hat' an alternative story. Non Chronological report- (London landmarks guidebook page) Poetry Samuel Pepys diary entry

English - punctuation

Question marks vs statements Conjunctions- and/ because Adjectives Capital letters for Proper Nouns Capital letter for

Art and design

Drawing

Computing

Online bullying Copyright and ownership/privacy and security

Geography

Local landmarks; Countries and capital cities of the UK; Physical features of the UK; Settlements; Human features; Weather and seasons; London – a capital city; Landmarks; Aerial images; Maps; Directions – locational and directional language; Geographical similarities and differences

History

Significant event – Great Fire of London

Music

Nursery rhymes Glockenspiel Stage 1

PSHE

Speaking, listening and sharing Identify, society and equality- me and others Drug, alcohol and tobacco education- What do we put in to and on to our bodies?

PE

Dance -Starry Skies Multi skills -Attacking and Defending Gymnastics -Animals Forest School

RE

Who is a Sikh and what do they believe? Why does Easter matter?



Taxi! **Design and technology**

Memorable experience (trips, visitor, fieldwork)

Investigating wheels, axles and chassis

Innovate challenge

Making a London taxi

Design and technology

Mechanisms – wheels, axles and chassis



Seasonal Changes **Science**

Innovate challenge

Let's investigate focus: Asking and answering questions

Computing

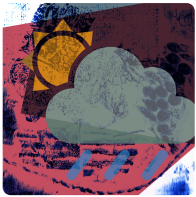
Managing online information Health, wellbeing and lifestyle

RE

What does it mean to belong to a faith community? What is the good news that Jesus brings?

Science

Seasons; Seasonal changes in deciduous and evergreen trees; Seasonal changes in animals; Weather; Seasonal weather; Day length; Investigating the Sun; Measuring wind; Measuring temperature; Measuring precipitation; Weather forecasting; Working scientifically – Observing changes over time, Identifying and classifying, Pattern seeking, Comparative test, Research



Rain and Sunrays **Art and design**

Memorable experience (trips, visitor, fieldwork)

Weather motifs

Innovate challenge

Creating weather collagraphs

Art and design

Motifs; Line and shape; Texture; Collagraphy



Y1 WRM – Spring (v2.0) **Mathematics**

Mathematics

Block 1: Number – Addition and subtraction; Block 2: Number – Numbers beyond 20; Block 3: Measurement – Length and height, Problems (measurement); Block 4: Measurement – Weight and mass, Problems (measurement), Volume and capacity



School Days **History**

Companions

- Street View **Art and design**
- Chop, Slice and Mash **Design and technology**
- Plant Parts **Science**
- Animal Parts **Science**

Term

Summer

Key Texts

The Owl who is afraid of the dark The Tiger who Came to Tea - Judith Kerr Tiger Walk- Dianne Hofmeyr Meerkat Mail - Emily Gravett

Additional texts

Whiffy Wilson: The Wolf who wouldn't go to school - Caryl Hart

Memorable experience (trips, visitor, fieldwork)

Cotswold Wildlife Park Visit

Innovate challenge

Planning a class assembly about similarities and differences between Victorian schools and schools today

English - Genres

Non Fiction text explaining what our school is like The Owl who is afraid of the dark- alternative version Poetry Recipe The Tiger who came to tea- wanted poster- to inform Alternative version Meerkat mail- Meerkat non chronological report Postcards Retelling the story.

English - punctuation

Capital letters for the start of sentences Demarcating sentences correctly and editing for them. Noun phrases

Art and design

[Street View] - 3-D murals; Buildings; Significant people - James Rizzi

Design and technology

[Chop, Slice and Mash] - Sources of food; Food preparation techniques; Hygiene rules; Designing and making salads and sandwiches

Geography

Fieldwork; Human and physical features; Maps; Local environment; Changes over time

History

Historical vocabulary; Historical artefacts; Timelines; Present day schools; Our school; Victorian era; Victorian schools; Significant people - Samuel Wilderspin

Music

Rhythm in the way we walk

PSHE

Special people; Positive contributions Mental Health and wellbeing - feelings My feelings, friends and family

PE

Swimming Multi skills -Running and jumping

Science

[Plant Parts] - Wild and garden plants; Seasonal changes; Plant parts; Seeds and bulbs; Investigating leaves; Importance of plants; Working scientifically - Identifying and classifying, Observing changes over time, Pattern seeking, Research, Comparative test. [Animal Parts] - Animals' body parts; Animal groups - amphibians, birds, fish, invertebrates, mammals, reptiles; Carroll and Venn diagrams; Pets; Carnivores, herbivores and omnivores; Earthworms; Working scientifically - Identifying and classifying, Comparative test, Pattern seeking, Research



Y1 WRM – Summer (v2.0) **Mathematics**

Mathematics

Block 1: Number – Time tables, Multiplication, Division; Block 2: Number – Fractions; Block 3: Geometry – Position, direction and coordinates; Block 4: Number – Numbers beyond 20; Block 5: Measurement – Money; Block 6: Measurement – Time



Y1 Computing **Computing**

Computing

Staying safe online; Algorithms; Programming and debugging; Using data